

# kreon installation manual

## technics & dimensions

electrical connection of current driven LEDs  
calculating total power of LED-driver system

$$\begin{aligned} P_{tot} &= n \times P_{led} \\ P_{driver} &\geq P_{tot} \\ I_{led} &= I_{driver} \end{aligned}$$

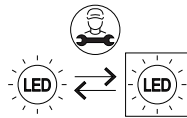
$n$  = number of LEDs  
 $P_{driver}$  = power of driver (Watt)  
 $P_{led}$  = power of LED (Watt)  
 $P_{total}$  = total power of all LEDs (Watt)

$I_{led}$  = LED current (mA)  
 $I_{driver}$  = Driver current (mA)

ALWAYS CHECK PRODUCT MANUAL!!

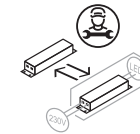
## 1. light source/gear information light source containing product

The light source contained in this luminaire shall only be replaced by the manufacturer or his service agent or a similar qualified person.



## gear containing product

the gear contained in this luminaire shall only be replaced by the manufacturer or his service agent or a similar qualified person



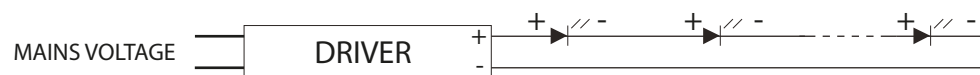
Please make sure the main voltage is disconnected before proceeding! ⚡

## 2. installation

in case of connecting 1 LED



in case of connecting multiple LEDs



IMPORTANT NOTE (in both cases)

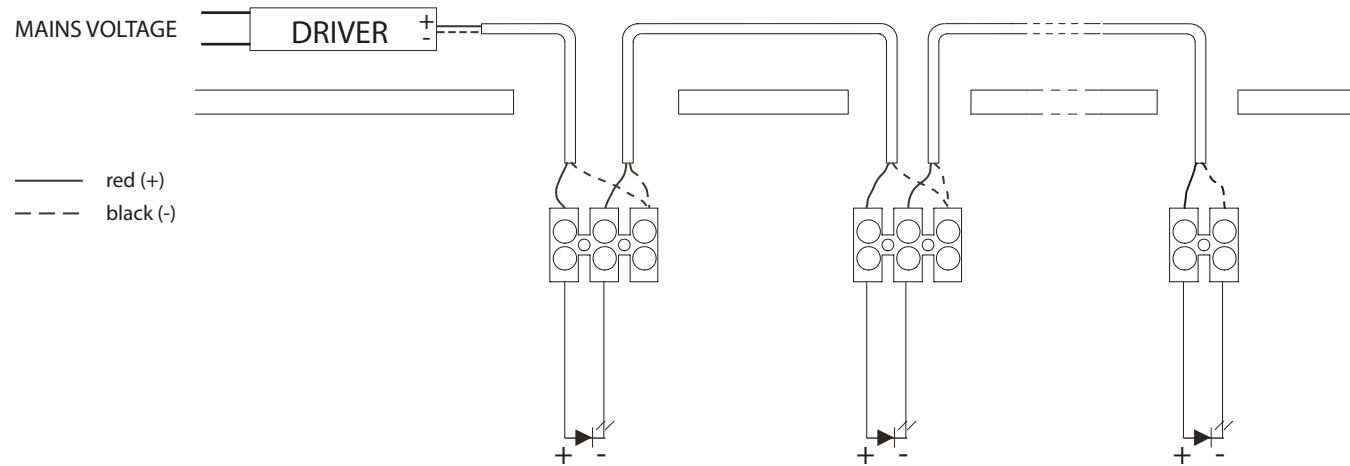
- mind the polarity of the LED! (\*)
  - + = red
  - = black
- make sure the driver hasn't been powered for at least 1 min. prior to connecting the LED string
- check your driver: if the driver is switchable, make sure you set the right current (same current as LED). the use of a too high current will damage the LEDs

(\*) in case the wires of LED are not red and black, check the product manual for more information!

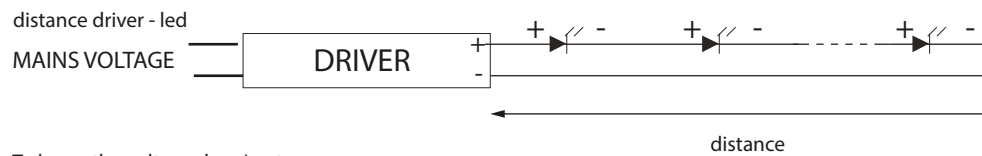
# kreon installation manual

## 3. installation

example of connecting multiple LEDs



## 4. installation



To know the voltage drop/meter:

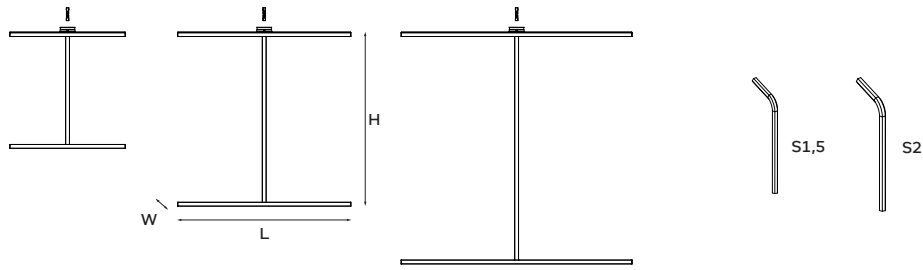
- determine led current, wire thickness and length of wiring
- length of wiring is the total length of all the wires going from/to the driver
- note: recommended distance (according to most suppliers) from driver to last LED is 5m  
lengths above 5m may induce RFI

V drop/meter*	Ledcurrent		
	350mA	500mA	700mA
0,5mm <sup>2</sup>	0,012V	0,0175V	0,025V
0,75mm <sup>2</sup>	0,0081V	0,012V	0,016V
1mm <sup>2</sup>	0,0061V	0,0088V	0,012V
1,5mm <sup>2</sup>	0,004V	0,0058V	0,0081V
2,5mm <sup>2</sup>	0,0025V	0,0035V	0,005V

(\*) length of wire = distance x2

# kreon installation manual

## technics & dimensions



name	reference	current	wattage	C	AxB	LxWxH
fuga 600	KR974172-ZZZZ-YY-XX	500mA	6,4W	285	102x102	600x20xYY
fuga 900	KR974272-ZZZZ-YY-XX	500mA	9,5W	435	102x102	900x20xYY
fuga 1200	KR974372-ZZZZ-YY-XX	500mA	12,7W	435	102x102	1200x20xYY

### IMPORTANT!

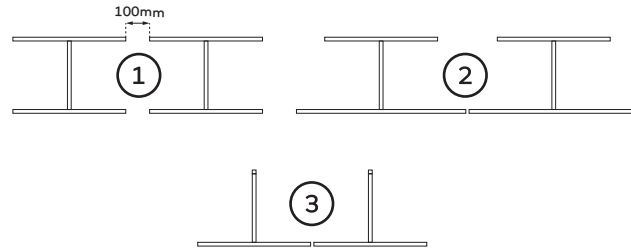
it is advised to only use metal anchor screws (M4, length depending on thickness drywall) instead of standard drywall plugs or universal plugs

Please make sure the main voltage is disconnected before proceeding! ⚡

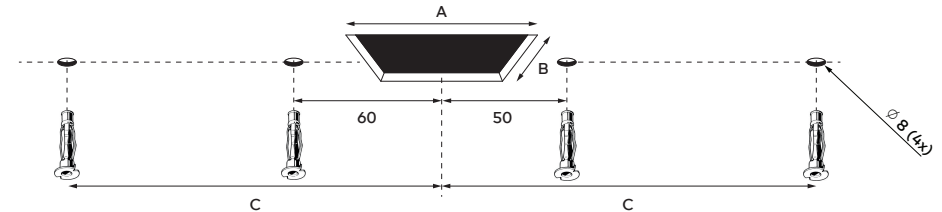


## 1. installation

**BE AWARE:** when multiple fuga fixtures are placed next to each other, make sure there is a minimum distance of 100mm between the ceiling profiles (1). you can also use ceiling profiles that are smaller than the LED (2), or install the ceiling profile perpendicular to the LED (3).

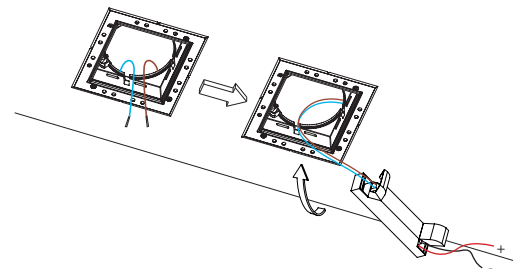


cut a square hole for the plasterkit and four round holes for the plugs, check the correct measurements for each fuga on the table above, install the plugs before proceeding

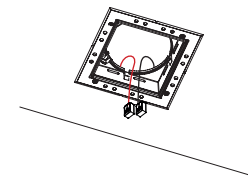


## 2. installation

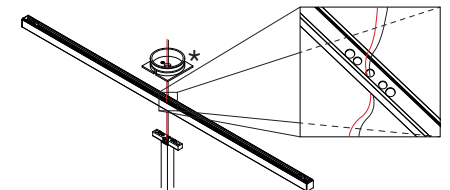
to install the down in-line 80 plasterkit see manual KR8170001758 install the correct gear with strain relief on the hollow ceiling



connect a connector to every cable of the driver



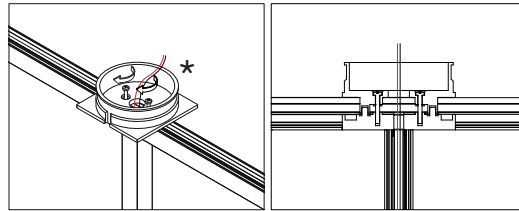
pull the LED cable through the ceiling profile and mounting plate



# kreon installation manual

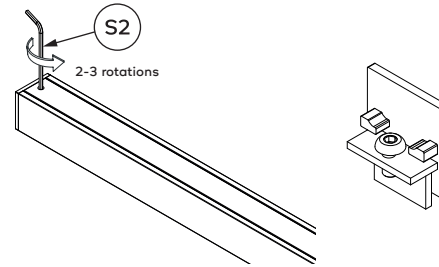
## 3. installation

assemble the parts together with the pre-mounted screws

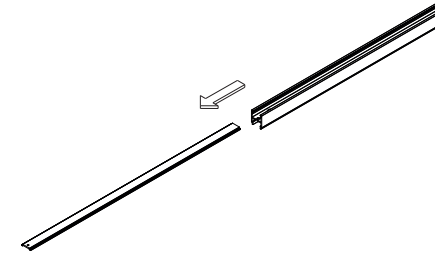


\* kreon provides a black and white mounting plate, client can choose which he wants to install

remove the end-caps by turning the hexagon key 2-3 times, keep the screw inside the end-cap for easier installation later

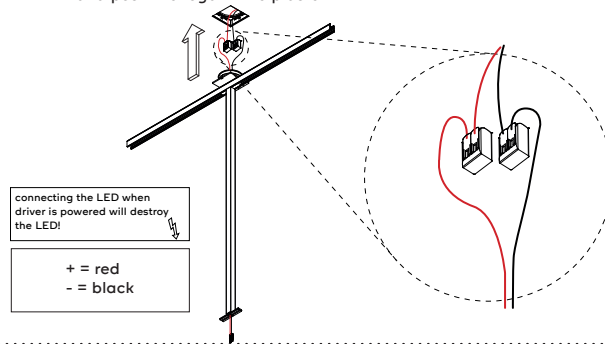


remove both cover profiles by sliding them out

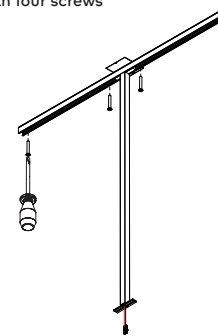


## 4. installation

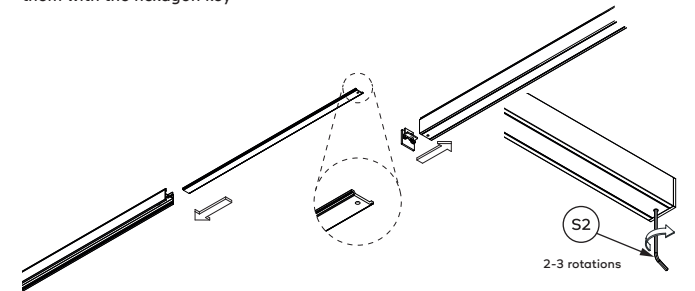
connect the power supply cables to the corresponding color and push the fuga in the plasterkit



fixate the ceiling profile with four screws

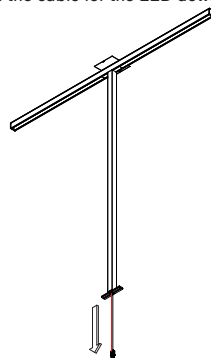


slide the covers back into place (make sure the hole is on the outside) then put the end-caps back and fixate them with the hexagon key

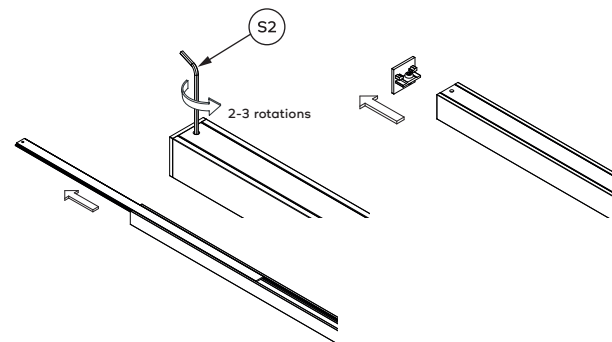


## 5. installation

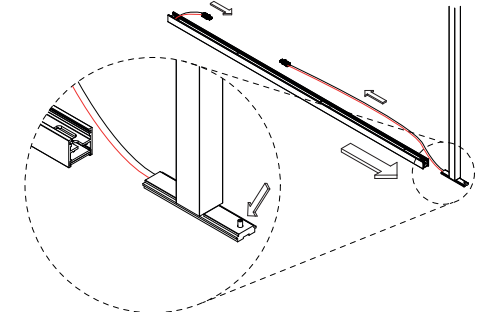
pull the cable for the LED down softly



remove both end-caps and covers from the LED-element



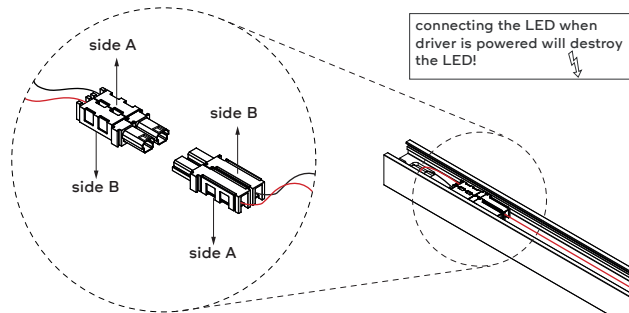
slide the LED-element on the vertical from the correct side! make sure the connectors are pointed towards each other and that the set screw is positioned on the other side!



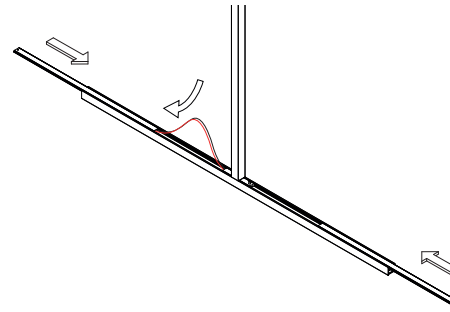
# kreon installation manual

## 6. installation

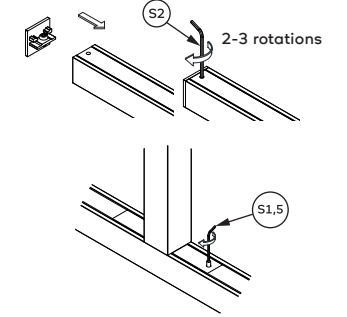
connect the wire to wire connectors, make sure the colors match (red-red, black-black) and that they are sided opposite of each other



slide the covers back into place, the cable must be tucked under the cover. (if you want the fuga asymmetrical, go to page 4)

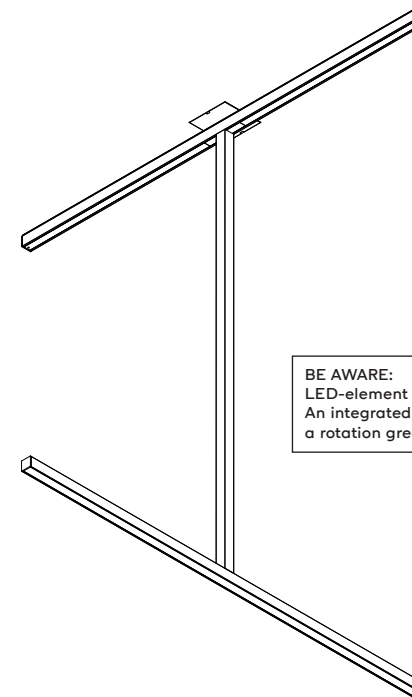
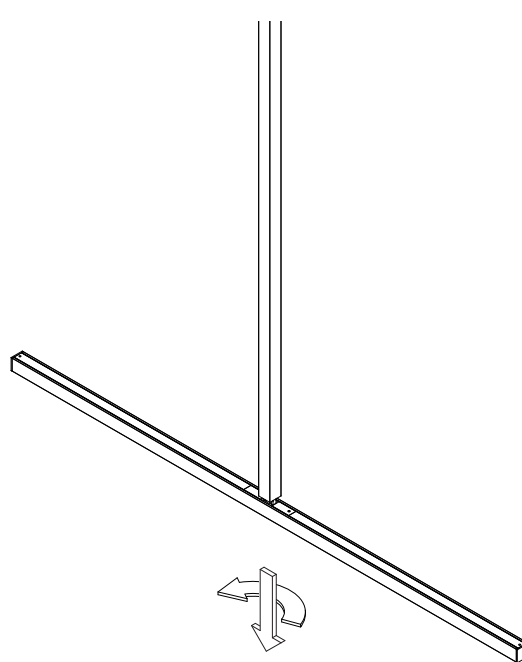


re-attach the end-caps and fixate the socket set screw inside the coupler mechanism

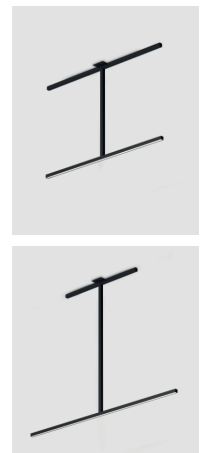


## 7. installation

the LED-element can be pulled down softly and rotated 90 degrees for a perpendicular set-up



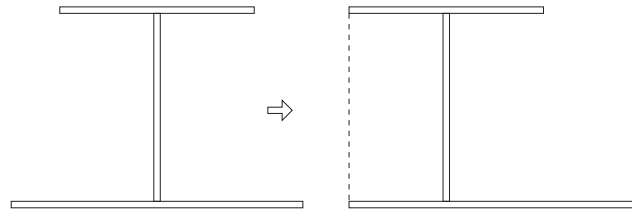
BE AWARE:  
LED-element can only rotate 90°. An integrated stop will prevent a rotation greater than 90°.



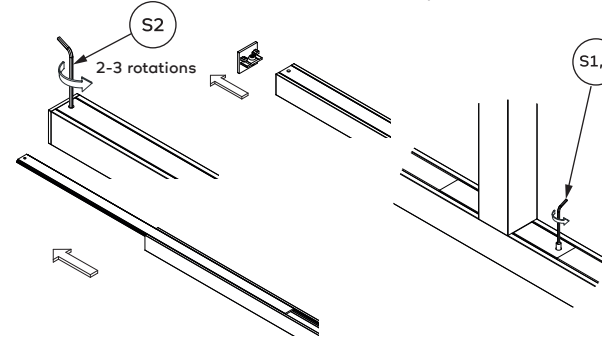
# kreon installation manual

## 8. asymmetric mode

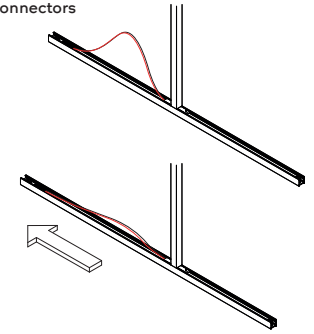
**BE AWARE:**  
fuga can only be placed asymmetrical if  
the ceiling profile is smaller than the LED



to place the LED asymmetrical to the vertical profile, first remove the end-caps and unscrew the socket set screw in the coupler mechanism

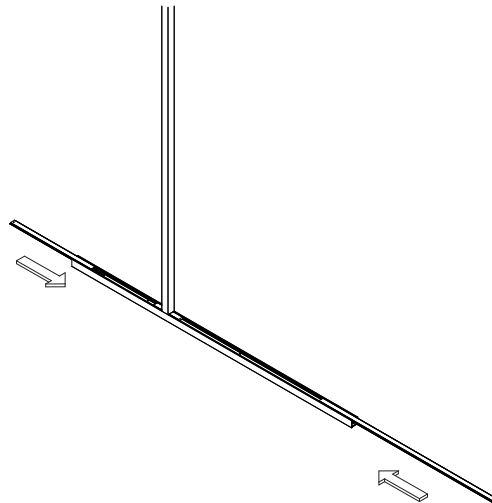


slide the LED asymmetrical. Make sure the  
vertical profile slides away from the  
connectors

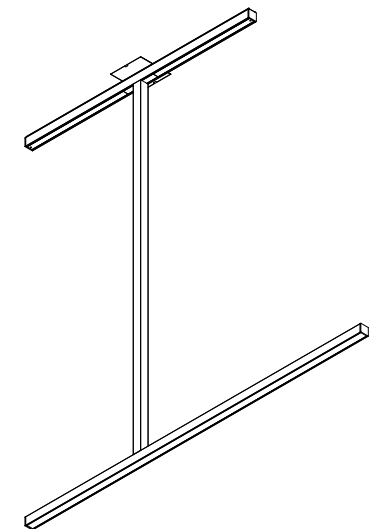
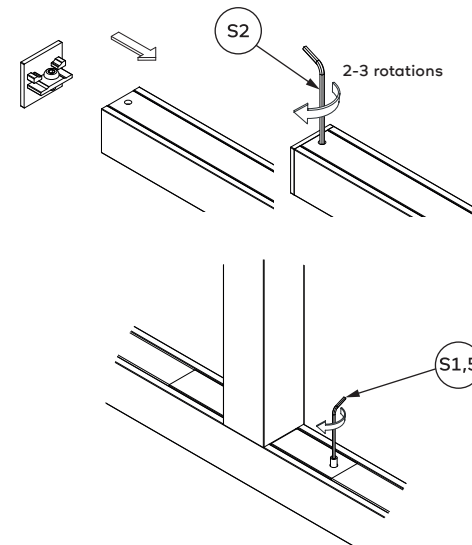


## 9. asymmetric mode

slide the asymmetrical covers into place

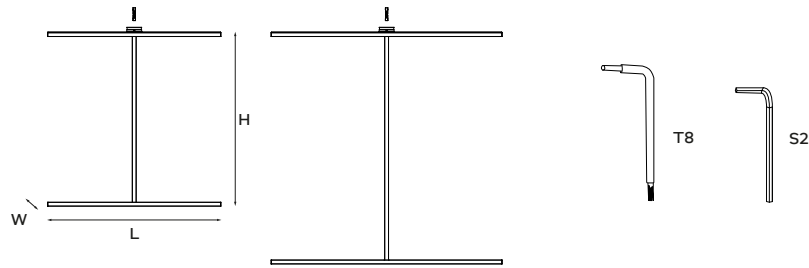


re-attach the end-caps and fixate the socket set  
screw inside the coupler mechanism



# kreon installation manual

## technics & dimensions



name	reference	current	wattage	B	C	AxB	LxWxH
fuga 900	KR974272-ZZZZ-YY-XX	500mA	9,5W	50	435	102x102	900x20xYY
fuga 1200	KR974372-ZZZZ-YY-XX	500mA	12,7W	50	435	102x102	1200x20xYY

### IMPORTANT!

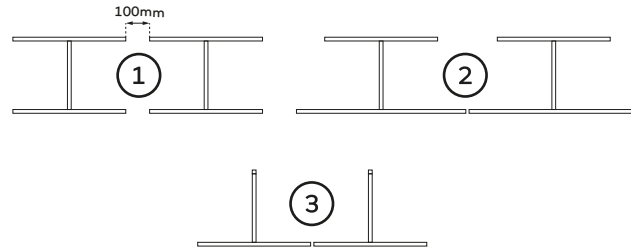
it is advised to only use metal anchor screws (M4, length depending on thickness drywall) instead of standard drywall plugs or universal plugs

Please make sure the main voltage is disconnected before proceeding!

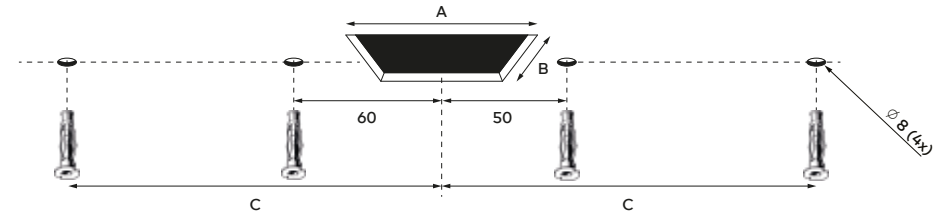


## 1. installation

**BE AWARE:** when multiple fuga fixtures are placed next to each other, make sure there is a minimum distance of 100mm between the ceiling profiles (1). you can also use ceiling profiles that are smaller than the LED (2), or install the ceiling profile perpendicular to the LED (3).



Drill a square hole for the plasterkit and four round holes for the plugs, check the correct measurements for each fuga on the table above, install the plugs before proceeding

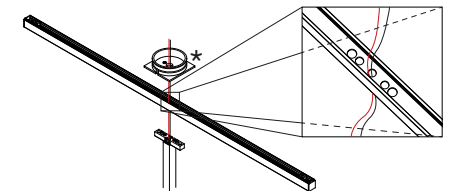
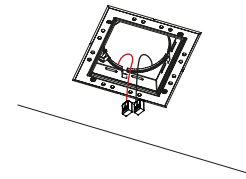
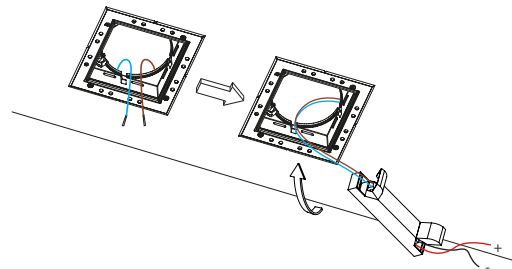


## 2. installation

To install the down in-line 80 plasterkit see manual KR8170001758, install the correct gear with strain relief on the hollow ceiling

Connect a connector to every cable of the driver

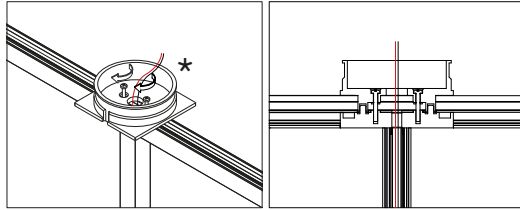
Pull the LED cable through the ceiling profile and mounting plate



# kreon installation manual

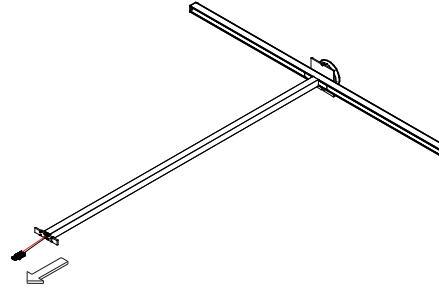
## 3. installation

assemble the parts together with the pre-mounted screws



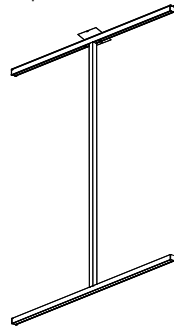
\* kreon provides a black and white mounting plate, client can choose which he wants to install

pull the cable for the LED down softly

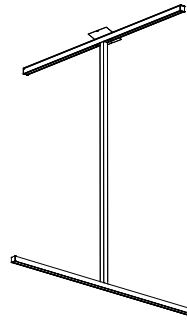


You need to decide the direction of the led element

1. standard set-up, in-line with the ceiling profile, go to step 5

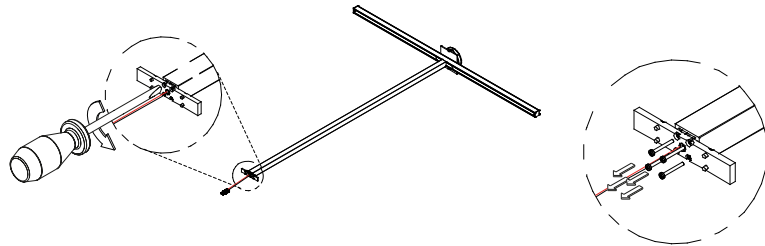


2. in a perpendicular set-up, follow next steps

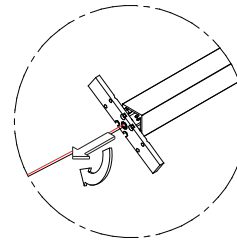


## 4. perpendicular set-up

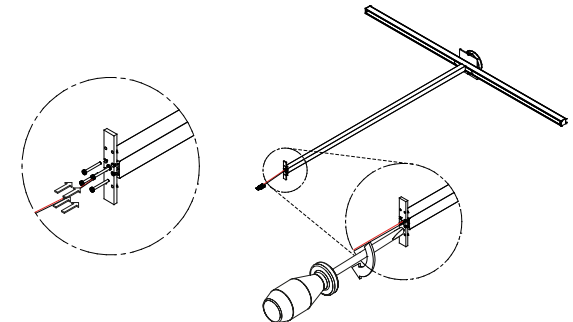
Unscrew the 4 screws at the bottom of the coupler and remove them (keep screws for later step)



Pull inner part out and turn it 90°



Use the 4 screws and screwdriver to tighten the inner part

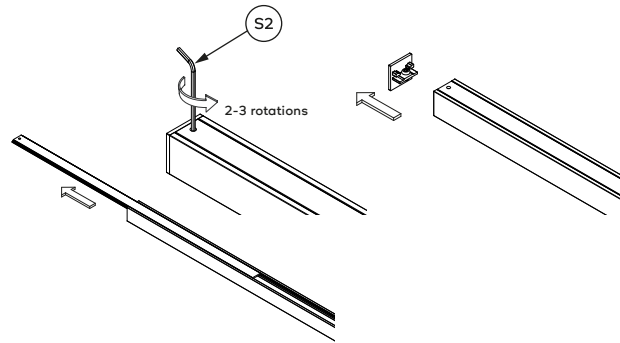




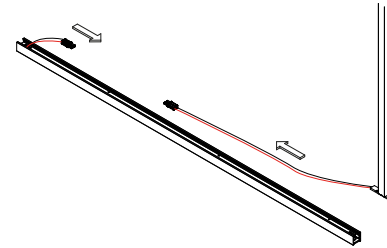
# kreon installation manual

## 5. installation

Remove both end-caps and covers from the LED-element

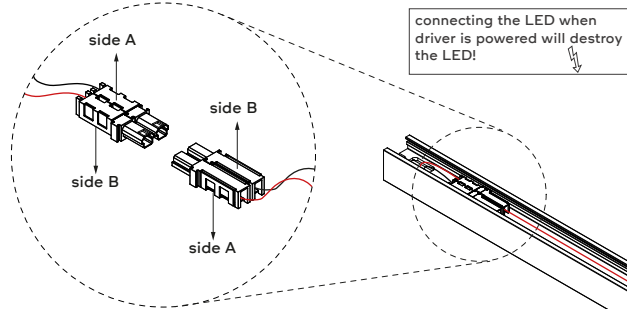


Make sure the connectors are pointed towards each other.

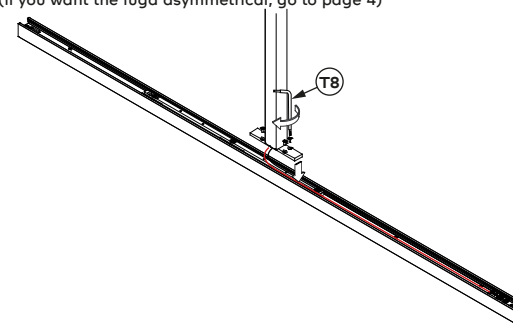


## 6. installation

Connect the wire to wire connectors, make sure the colors match (red-red, black-black) and that they are placed opposite of each other

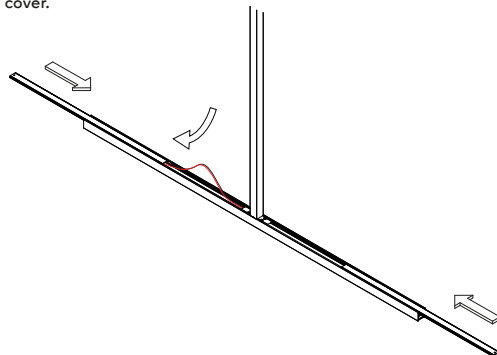


Use the 4 screws provided to attach the LED element to the coupler (if you want the fuga asymmetrical, go to page 4)

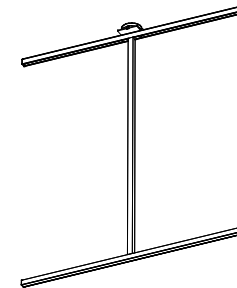
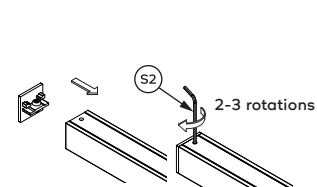


## 7. installation

Slide the covers back into place, the cable must be tucked under the cover.



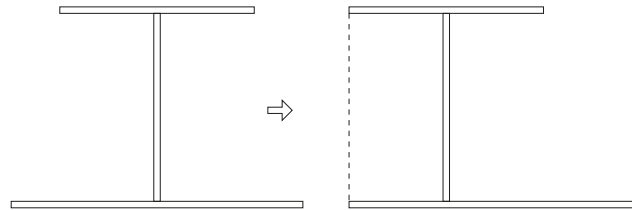
Re-attach the end-caps



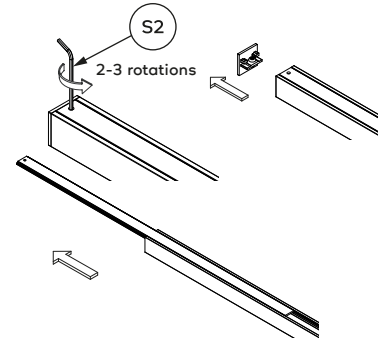
# kreon installation manual

## 8. asymmetrical mode

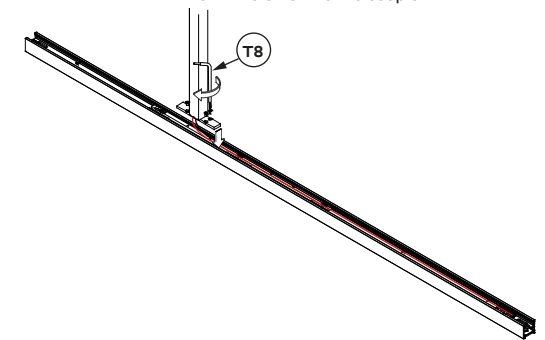
**BE AWARE:**  
fuga can only be placed asymmetrical if  
the ceiling profile is smaller than the LED



To place the LED asymmetric to the vertical profile, first remove the end-caps

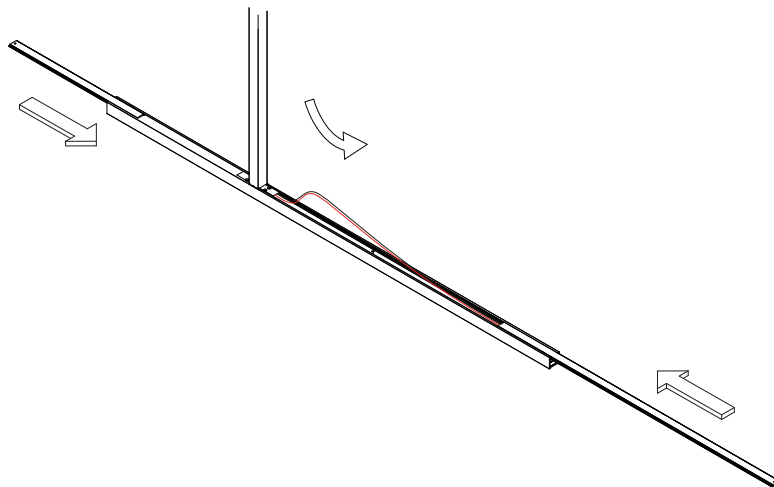


Use the 4 screws provided to attach  
the LED element to the coupler

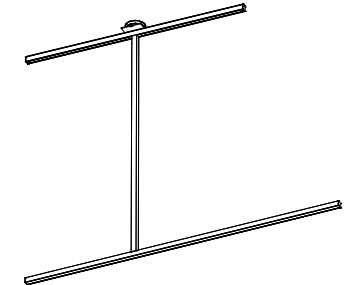
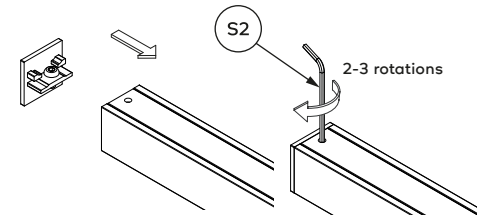


## 9. asymmetrical mode

Make sure the vertical profile slides away  
from the connectors  
Slide the asymmetrical covers into place



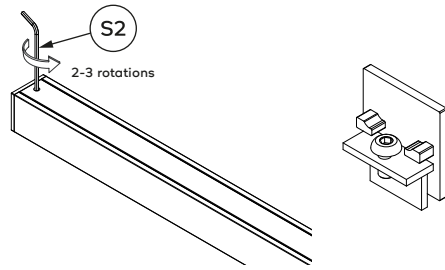
Re-attach the end-caps and fixate the socket set  
screw inside the coupler mechanism



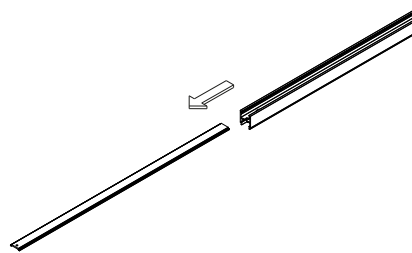
# kreon installation manual

## 10. installation

Remove the end-caps of the ceiling profile by turning the hexagon key 2-3 times, keep the screw inside the end-cap for easier installation later

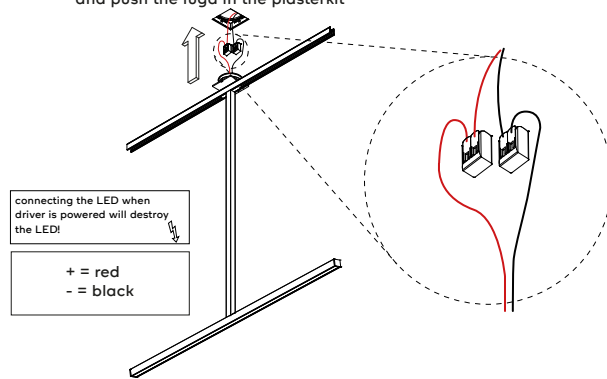


Remove both cover profiles by sliding them out

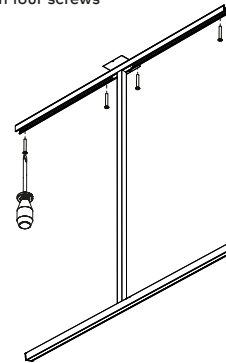


## 11. installation

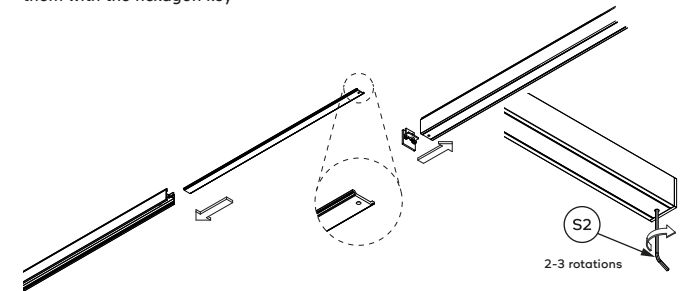
Connect the power supply cables to the corresponding color and push the fuga in the plasterkit



Fixate the ceiling profile with four screws

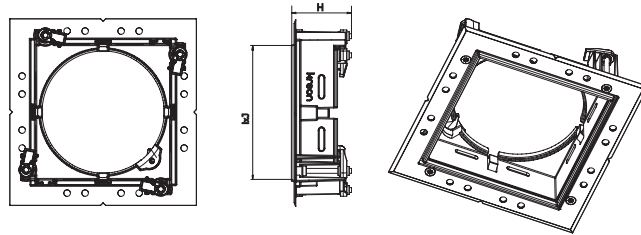


Slide the covers back into place (make sure the hole is on the outside) then put the end-caps back and fixate them with the hexagon key



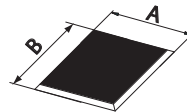
# kreon installation manual

## technics & dimensions

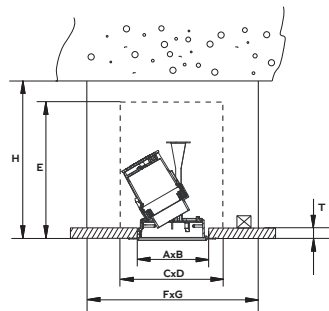


name	reference	lxJ	H
Down in-line 80 plasterkit no shadow gap	KR717114	80x80	37
Down in-line 80 plasterkit shadow gap	KR717118	86x86	37
Down in-line 80 plasterkit double	KR727114	80x165	37
Down in-line 60 plasterkit	KR707184	61x61	50
Down in-line 40 plasterkit	KR707114	40x40	27
Down in-line 40 plasterkit deep recessed	KR707714	40x40	51

## technics & dimensions



name	reference	lamp type	AxB	CxD	E <sub>min</sub>	FxG	H <sub>min</sub>	T <sub>min-Tmax</sub>
Down in-line 80 plasterkit (shadow gap)	KR717114	QR-CBC51	KR917703	102x102	170x170	130	320x320	200 9-26
	KR717118	LED dir.	KR917733	102x102	170x170	140	300x300	157 9-26
		LED dir.	KR91793X	102x102	95x95	115	344x344	120 9-26
		WW / LED fix	KR91733X/KR917033	102x102	200x200	100	260x260	100 9-26
		LED dir. HE	KR917X23	102x102	95x95	115	344x344	120 9-26
		Audio	KR91779X	102x102	150x150	130	200x200	130 9-26
Down in-line 60 plasterkit	KR707184	LED MR16 dir/fix	KR917803/KR917233	102x102	191x191	110	350x350	110 9-26
Down in-line 40 plasterkit	KR707114	LED PAR16 dir/fix	KR917843/KR917253	102x102	176x176	130	330x330	130 9-26
Down in-line 40 plasterkit deep recessed	KR707714	Fixed, WW	KR907X63 / KR907563	Ø100	100x100	100	265x265	140 9-26
Down in-line 80 plasterkit double	KR727114	LED dir, fixed, WW	KR907X63/KR907333 / KR91733X	63x63	110x110	80	110x110	80 9-14
		fixed	KR907033	63x63	110x110	104	110x110	104 9-14
		QR-CBC51	KR917703	102x177	220x220	130	400x400	200 9-26
		LED dir.	KR917733	102x177	220x220	140	400x400	200 9-26
		Fixed, WW	KR91733X/KR917033	102x177	254x254	105	552x552	105 9-26
		Audio	KR91779X	102x177	150x220	130	230x230	130 9-26

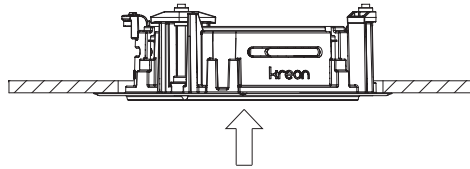


FxGxH: min dimension for cooling, gear inclusive  
 CxDxE: min dimension for rotation  
 (can be applied with non combustable matter, gear exclusive)

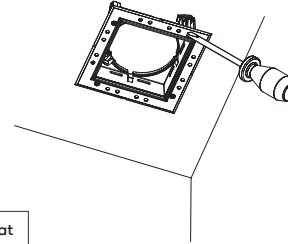
# kreon installation manual

## installation

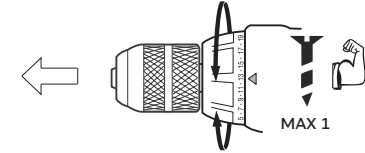
Put the plasterkit through the hole.



Fix the plasterkit with the screws.



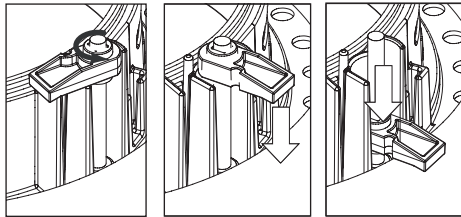
Assembling torque max 20 cN.m.



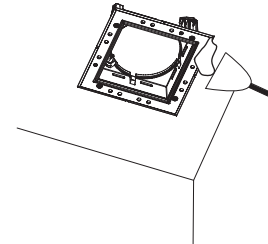
Please make sure that sticker is removed before proceeding

## installation

Assembling principle



Fill around perimeter of plasterkit using suitable filler and plaster to hide screws and plasterkit



Minimum filler distance, spread out until zero.

